

CK1 α 1, Active

Full length recombinant protein expressed in Sf9 cells

Catalog # C64-10G-10

Lot # E257-2

Product Description

Full length recombinant human CK1 α 1 was expressed by baculovirus in Sf9 insect cells using an N-terminal GST tag. The gene accession number is [NM_001892](#).

Gene Aliases

CSNK1A1, CK1, HLCDDP1, PRO2975

Concentration

0.1 $\mu\text{g}/\mu\text{l}$

Formulation

Recombinant protein stored in 50mM Tris-HCl, pH 7.5, 150mM NaCl, 10mM glutathione, 0.1mM EDTA, 0.25mM DTT, 0.1mM PMSF, 25% glycerol.

Storage, Shipping and Stability

Store product at -70°C . For optimal storage, aliquot target into smaller quantities after centrifugation and store at recommended temperature. For most favorable performance, avoid repeated handling and multiple freeze/thaw cycles. Stability is 1yr at -70°C from date of shipment. Product shipped on dry ice.

Scientific Background

CK1 α 1 is a member of the CK1 family of serine/threonine protein kinases which play an important role in diverse cell processes. CK1 can regulate Smo cell surface accumulation and activity in response to hedgehog. CKI phosphorylate Smo at several sites and phosphorylation-deficient forms of Smo fail to accumulate on the cell surface and are unable to transduce the hedgehog signal (1). CK1 α 1 dynamically associates with the CBM complex on T cell receptor engagement to participate in cytokine production and lymphocyte proliferation. CK1 α 1 can form complex with MDM2 which then regulates the stability of p53 and E2F-1 transcription factors (2).

References

1. Jia, J. et al: Hedgehog signalling activity of Smoothed requires phosphorylation by protein kinase A and casein kinase I. *Nature* 432: 1045-1050, 2004.
2. Huart, A S. et al: CK1 α plays a central role in mediating MDM2 control of p53 and E2F-1 protein stability. *J Biol Chem.* 2009 Nov 20;284(47):32384-94.

Purity

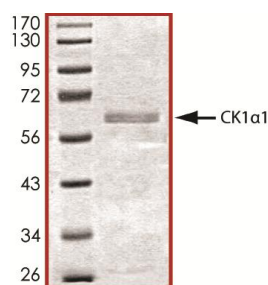
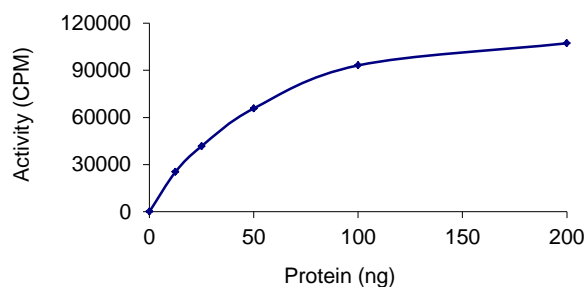


Figure 1. SDS-PAGE gel image

The purity of CK1 α 1 was determined to be **>80%** by densitometry, approx. MW **~62kDa**.

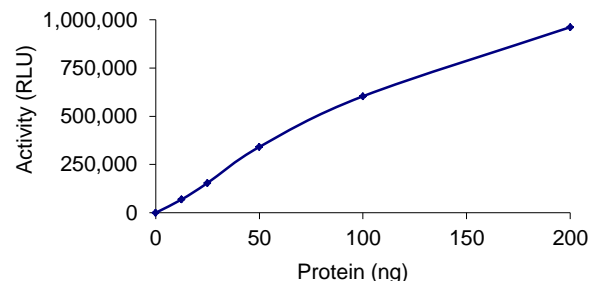
Specific Activity

Figure 2. Radiometric Assay Data



The specific activity of CK1 α 1 was determined to be **120 nmol /min/mg** as per activity assay protocol.
(For Radiometric Assay Protocol on this product please see pg. 2)

Figure 3. ADP-Glo™ Assay Data



The specific activity of CK1 α 1 was determined to be **72 nmol /min/mg** as per activity assay protocol.
(For ADP-Glo™ Assay Protocol on this product please see pg. 3)

Activity Assay Protocol

Reaction Components

Active Kinase (Catalog #: C64-10G)

Active CK1 α 1 (0.1 μ g/ μ l) diluted with Kinase Dilution Buffer III (Catalog #: K23-09) and assayed as outlined in sample activity plot. (Note: these are suggested working dilutions and it is recommended that the researcher perform a serial dilution of Active CK1 α 1 for optimal results).

Kinase Dilution Buffer III (Catalog #: K23-09)

Kinase Assay Buffer I (Catalog #: K01-09) diluted at a 1:4 ratio (5X dilution) with 50ng/ μ l BSA solution.

Kinase Assay Buffer I (Catalog #: K01-09)

Buffer components: 25mM MOPS, pH 7. 2, 12.5mM β -glycerol-phosphate, 25mM MgCl₂, 5mM EGTA, 2mM EDTA. Add 0.25mM DTT to Kinase Assay Buffer prior to use.

[³³P]-ATP Assay Cocktail

Prepare 250 μ M [³³P]-ATP Assay Cocktail in a designated radioactive working area by adding the following components: 150 μ l of 10mM ATP Stock Solution (Catalog #: A50-09), 100 μ l [³³P]-ATP (1mCi/100 μ l), 5.75ml of Kinase Assay Buffer I (Catalog #: K01-09). Store 1ml aliquots at -20°C.

10mM ATP Stock Solution (Catalog #: A50-09)

Prepare ATP stock solution by dissolving 55mg of ATP in 10ml of Kinase Assay Buffer I (Catalog #: K01-09). Store 200 μ l aliquots at -20°C.

Substrate (Catalog #: C03-54BN)

Casein, Dephasphorylated, a protein substrate, was diluted in distilled H₂O to a final concentration of 1mg/ml.

Assay Protocol

- Step 1.** Thaw [³³P]-ATP Assay Cocktail in shielded container in a designated radioactive working area.
- Step 2.** Thaw the Active CK1 α 1, Kinase Assay Buffer, Substrate and Kinase Dilution Buffer on ice.
- Step 3.** In a pre-cooled microfuge tube, add the following reaction components bringing the initial reaction volume up to 20 μ l:
 - Component 1.** 10 μ l of diluted Active CK1 α 1 (Catalog #C64-10G)
 - Component 2.** 5 μ l of 1mg/ml stock solution of substrate (Catalog #C03-54BN)
 - Component 3.** 5 μ l distilled H₂O (4°C)
- Step 4.** Set up the blank control as outlined in step 3, excluding the addition of the substrate. Replace the substrate with an equal volume of distilled H₂O.
- Step 5.** Initiate the reaction by the addition of 5 μ l [³³P]-ATP Assay Cocktail bringing the final volume up to 25 μ l and incubate the mixture in a water bath at 30°C for 15 minutes.
- Step 6.** After the 15 minute incubation period, terminate the reaction by spotting 20 μ l of the reaction mixture onto individual pre-cut strips of phosphocellulose P81 paper.
- Step 7.** Air dry the pre-cut P81 strip and sequentially wash in a 1% phosphoric acid solution (dilute 10ml of phosphoric acid and make a 1L solution with distilled H₂O) with constant gentle stirring. It is recommended that the strips be washed a total of 3 intervals for approximately 10 minutes each.
- Step 8.** Count the radioactivity on the P81 paper in the presence of scintillation fluid in a scintillation counter.
- Step 9.** Determine the corrected cpm by removing the blank control value (see Step 4) for each sample and calculate the kinase specific activity as outlined below.

Calculation of [³³P]-ATP Specific Activity (SA) (cpm/pmol)

Specific activity (SA) = cpm for 5 μ l [³³P]-ATP / pmoles of ATP (in 5 μ l of a 250 μ M ATP stock solution, i.e., 1250 pmoles)

Kinase Specific Activity (SA) (pmol/min/ μ g or nmol/min/mg)

Corrected cpm from reaction / [(SA of ³³P-ATP in cpm/pmol)*(Reaction time in min)*(Enzyme amount in μ g or mg)]*[(Reaction Volume) / (Spot Volume)]

ADP-Glo™ Activity Assay Protocol

Reaction Components

CK1α1 Kinase Enzyme System (Promega, Catalog #:V4484)

CK1α1, Active, 10μg (0.1μg/μl)
Casein, Dephosphorylated, 1ml (1mg/ml)
Reaction Buffer A (5X), 1.5ml
DTT (0.1M), 25μl

ADP-Glo™ Kinase Assay Kit (Promega, Catalog #: V9101)

Ultra Pure ATP, 10 mM (0.5ml)
ADP, 10 mM (0.5ml)
ADP-Glo™ Reagent (5ml)
Kinase Detection Buffer (10ml)
Kinase Detection Substrate (Lyophilized)

Reaction Buffer A (5X)

200mM Tris-HCl, pH 7.5, 100mM MgCl₂ and 0.5 mg/ml BSA.

Assay Protocol

The CK1α1 assay is performed using the CK1α1 Kinase Enzyme System (Promega; Catalog #: V4484) and ADP-Glo™ Kinase Assay kit (Promega; Catalog #: V9101). The CK1α1 reaction utilizes ATP and generates ADP. Then the ADP-Glo™ Reagent is added to simultaneously terminate the kinase reaction and deplete the remaining ATP. Finally, the Kinase Detection Reagent is added to convert ADP to ATP and the newly synthesized ATP is converted to light using the luciferase/luciferin reaction. For more detailed protocol regarding the ADP-Glo™ Kinase Assay, see the technical Manual #TM313, available at www.promega.com/tbs/tm313/tm313.html.

- Step 1.** Thaw the ADP-Glo™ Reagents at ambient temperature. Then prepare Kinase Detection Reagent by mixing Kinase Detection Buffer with the Lyophilized Kinase Detection Substrate. Set aside.
- Step 2.** Thaw the components of CK1α1 Enzyme System, ADP and ATP on ice.
- Step 3.** Prepare 1ml of 2X Buffer by combining 400μl Reaction Buffer A, 1μl DTT and 599μl of dH₂O.
- Step 4.** Prepare 1ml of 250μM ATP Assay Solution by adding 25μl ATP solution (10mM) to 500μl of 2X Buffer and 475μl of dH₂O.
- Step 5.** Prepare diluted CK1α1 in 1X Buffer (diluted from 2X buffer) as outlined in sample activity plot. (Note: these are suggested working dilutions and it is recommended that the researcher perform a serial dilution of Active CK1α1 for optimal results).
- Step 6.** In a white 96-well plate (Corning Cat # 3912), add the following reaction components bringing the initial reaction volume up to 20μl:

Component 1.	10μl of diluted Active CK1α1
Component 2.	5μl of 1mg/ml stock solution of substrate
Component 3.	5μl of 2X Buffer
- Step 7.** Set up the blank control as outlined in step 6, excluding the addition of the substrate. Replace the substrate with an equal volume of distilled H₂O.
- Step 8.** At the same time as the CK1α1 kinase reaction, set up an ATP to ADP conversion curve at 50μM ATP/ADP range as described in the ADP-Glo™ Kinase Assay technical Manual #TM313.
- Step 9.** Initiate the CK1α1 reactions by the addition of 5μl of 250 μM ATP Assay Solution thereby bringing the final volume up to 25μl. Shake the plate and incubate the reaction mixture at 30°C for 15 minutes.
- Step 10.** Terminate the reaction and deplete the remaining ATP by adding 25μl of ADP-Glo™ Reagent. Shake the 96-well plate and then incubate the reaction mixture for another 40 minute at ambient temperature.
- Step 11.** Add 50μl of the Kinase Detection Reagent, shake the plate and then incubate the reaction mixture for another 30 minute at ambient temperature.
- Step 12.** Read the 96-well reaction plate using the Kinase-Glo™ Luminescence Protocol on a GloMax® Microplate Luminometer (Promega; Cat # E6501).
- Step 13.** Using the conversion curve, determine the amount of ADP produced (nmol) in the presence (step 6) and absence of substrate (Step 7) and calculate the kinase specific activity as outlined below. For a detailed protocol of how to determine nmols from RLU, see Kinase Enzyme Systems Protocol at: <http://www.promega.com/KESProtocol>

Kinase Specific Activity (SA) (nmol/min/mg)

(ADP (step 6) – ADP (Step 7)) in nmol / (Reaction time in min)*(Enzyme amount in mg)